



FTW Ranch Capabilities and Summary

Updated December 26, 2023

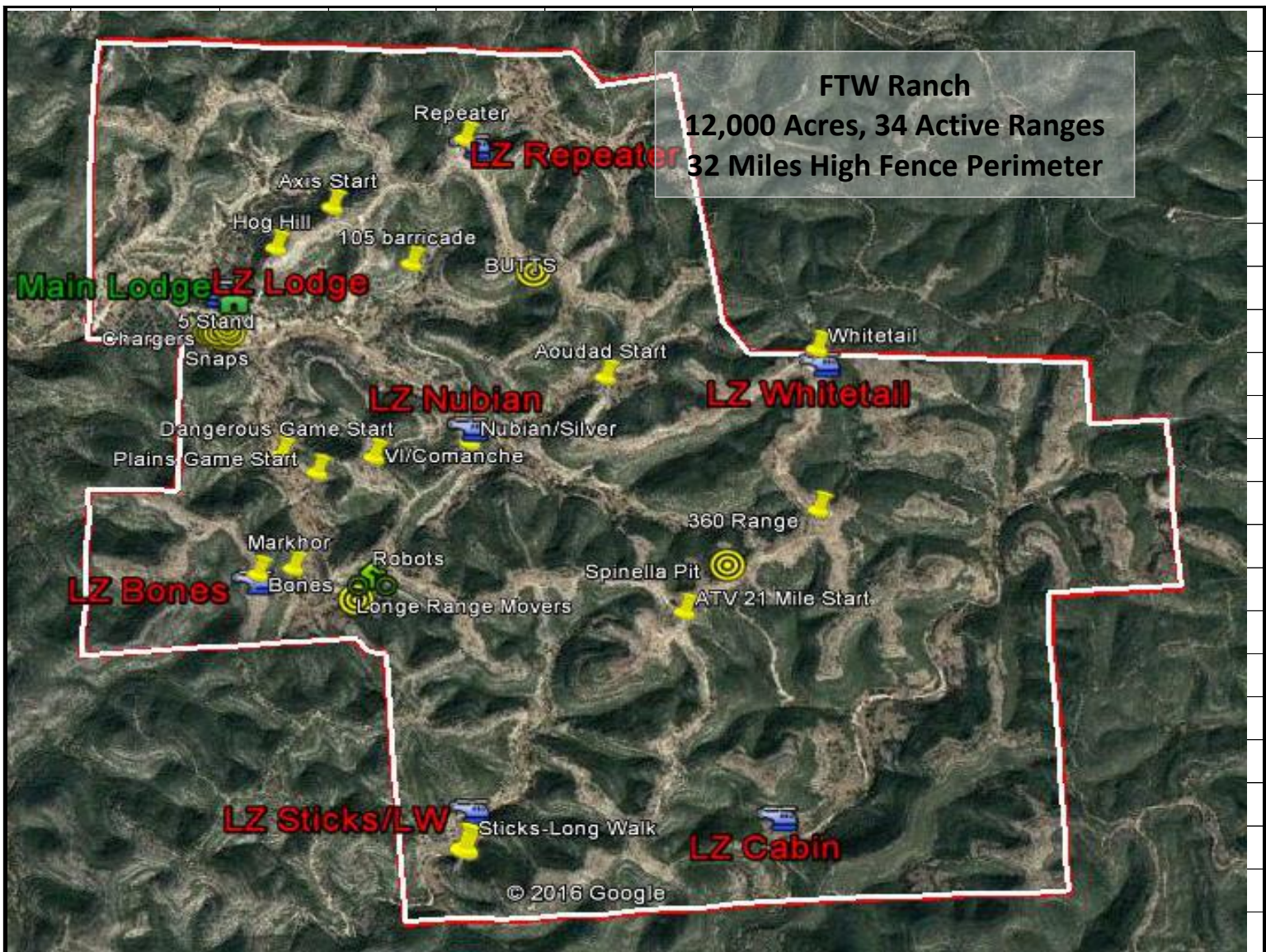
Size/Location	12,000 + Acres, REAL County, Texas- 1802 Horse Hollow Road, Barksdale, TX 78828 www.ftwsaam.com 830-234-4366
Access	Ranch Road 335 (Edwards County) to County Road 228 Dead ends at FTW Ranch front gate in REAL County. Emergency rear exit in case of flood, backs into Edwards and Real Counties.
Security	The FTW Ranch is surrounded by 32 miles of 8Ft. High Security Fence. Secure access points under camera surveillance. Secure lodge, 21 cabins, 5,000 Sq. Ft. Maintenance/Storage building, and 1,000 Sq. Ft. secure munitions storage. Security cameras around living/storage areas.
Trails/Roads	Very mountainous/rugged with 115 Miles of drivable (by 4 wheel drive) roads, with another 45 miles of 4-Wheeler/Hiking trails. Elevation, 1,750ft. To 2,250ft, 4,000DA (2,000ft.-80F)
Safety	Seven (7) Helicopter Landing sites and EVAC plan in force. Life Flight from Kerrville Texas.
Communications	100% in-house radio with two private channels as well as local law enforcement access. Five (5) Land Lines and three Wi-Fi via Fiber-Optic systems.
Housing	Thirteen (13) guest cabins, 30 beds, each cabin with private bath, each air conditioned/heated. Eight (8) crew quarters cabins to support staff. Linens are checked daily & changed by group or sooner upon request.
Guest Capacity	Full kitchen/meal services, serves up to 30 guests and crew with full 3 meals daily. Classroom with 24 student seating with complete audio/visual capabilities.
Meals	Three meals served daily: Breakfast: Custom made egg choices, meats as well as starch items, along with a variety of cereal and fruit choices. Lunch: Hamburgers, Chef Salads w/choice of meats, Pizza, Club Sandwiches w/soup/chips, BLT/Soup/Chips, Casseroles, Barbecue sandwiches with onion rings w/lighter choices for lower carbs served at each meal. Dinner: Ribs/Sausage, Brisket, Mexican enchiladas and fajitas, steaks, seafood, stuffed chicken, all served with soup, salad and 2 vegetables minimum and a variety of breads/deserts.
Support Amenities	A) Full Gym, B) Shipping/Receiving office with secure storage, C) full meat processing room, D) 5,000 sq.. maintenance area E) Fully equipped 1,000 sq. ft. weapons cleaning area. F) 1,000 sq.. Munitions storage area G) Full Bar, H) Fire pit and outdoor barbecue, I) 15+ miles of observer/guest hiking trails, J) Vehicle/equipment maintenance area. K) Living Area with TV/surround sound.
Internal Access	All ranges are located within easy reach of the lodging facilities with the furthest being 18 minutes away, most are within 10 minutes and are accessible by our many ranch vehicles all built with 4 seats and full gun and equipment racks.
Ranch equip. & support	8 Peronnel Jeeps, 4 pick up trucks, bulldozer, excavator, wheel loader, skid steer with forks, farm tractor, dump truck, multiple trailers and mobile welding system.
Wildlife	The FTW is home to 16 species of wildlife from around the world which makes for great viewing and target observation drills. Predator control such as Feral Hogs, Bobcats and coyotes are available for student hunting and works very well for night operations training.
Ranges	Please see below, 35 total ranges, 20 of which are covered. The Drive Around/Mobile/ATV and hiking/walking ranges are not covered.



Range Descriptions (All targets and ranges are permanent structures in place all year.)

#	Yard Line or Meters	Paper	Steel	# of Targets	Capacity-Shooters	 Comments 
1	Aoudad Drive- 10 Station, 20 Shot					See Aoudad Spec Sheet
	235-610	100 Zero	YES	46	6	Steel and life size silhouettes at each station, using natural environment, logs, rocks for real life hunting scenarios.
2	ATV Drive Around- 10 Station 21 Mile					See ATV Spec Sheet
	245-980	100 Zero	YES	60	16	21 Mile driving course with way points and GPS coordinates, target ID, verification and scored kills.
3	Awning Hoping- 4 Ranges Drill, 5 shots ea.					See Awning Hoping Spec Sheet
	100-3,000	YES	YES	274	12	Start at Hog Hill to St. Hubert's to Crusader to Silver. 5 Shots per awning, see score sheet.
4	Axis Drive- 10 Station, 20 Shot Drive Around					See Axis Spec Sheet
	280-550	100 Zero	YES	40	6	Steel and life size silhouettes at each station, using natural terrain such as logs, rocks and vegetation for lifelike shooting scenarios.
5	Barricades/Urban Range- - <i>Military/LE Only</i>					See Barricades Spec Sheet
	185-685	NO	YES	28	6	Unknown distance urban simulation behind barricades and facades.
6	Bones- ISIS City- <i>Military/LE</i>					See Bones Spec Sheet
	100-1,100	100 Zero	YES	78	12	Angled shooting to 12 degrees, ISIS City building facades and POP up's in all windows. ISIS truck with 6 bad guys and RPG simulator & 500 Yard Movers.
7	Broadside Movers- Reactionary/Close					See Lodge Range Spec Sheet
	10-100	YES	NO	10	10	Variable speed paper targets from 1MPH to 12MPH, prone, sitting and standing.
8	BUTTS- with Movers- <i>Military/LE Only</i>					Under Construction
	800	100 Zero	YES	30	12	Vertical travel 4' Dope verification/truing targets and horizontal movers at variable speed.
9	Chargers- Dangerous Game					See Lodge Range Spec Sheet
	10-50	YES	NO	16	6	Life size buff & elephant charging, 1MPH-10MPH.
10	Comanche- UL and Slope- <i>Mil/LE</i>					Under Construction
	500-2,300	100 Zero	YES	212	12	Angled shooting to 22 degrees out to 800 and ultra long to 2,500 yard truing
11	Crusader- Angled Over-Watch, Hair in Scope					See Crusader Spec Sheet
	100-1,200	100 Zero	Yes	48	12	Over watch with target recognition (hidden life size silhouettes) for observation training and target selection drills.
12	Dangerous Game- Walk Through					See Dangerous Game Spec Sheet
	5-50	Yes	NO	16	6	Life Size animated, charging and motion dangerous game targets, crocodile, hippo, lion, elephant and Cape buffalo
13	"Duck Pond" - Truing and Basic Walkout					See Duck Pond Spec Sheet
	100-1,000	YES	YES	30	12	Paper at 100/200, Steel every 50 to 700 & 1,000.
14	"Field Condition-Non Std Positional" 10 Shot					See each Field Conditioning Spec Sheet
	Timber Trek & Rock & Roll-2ea		NO	30	6	All four ranges utilize natural supports such as rocks, trees, stumps. All targets are UKD. Great for field simulation and PRS type training. Each course is scored.
Chula Vista & Escondido-2ea		NO	30	6		
16	Five-Stand/Skeet- Shotgun					See Lodge Range Spec Sheet
	5-40	NO	NO	25	5	6 skeet throwers, both automatic and manual. Rabbits, Teal, going away, coming too and 2 broadsides-both directions.
17	Hog Hill- Unknown Dist/Target Acq.					See Hog Hill Spec Sheet
	225-1,000	100 Zero	YES	60	12	All unknown distance, target acquisition, Target ID, all steel plates, 1, 2 and 3MOA. Pressure drills!

18	Jungle Course-Walk Through					See Jungle Spec Sheet
	10-65	YES	NO	20	6	Life Size Jungle species, Bongo, Hippo, Sitatunga, Duikers and metal plates for shotgun training. All targets can be switched out for Military application.
19	Lodge Right- Zero and Big Bore					See Lodge Range Spec Sheet
	25-250	YES	YES	20	10	25 Yard increments
20	Lodge Center- 100 Yard Zero					See Lodge Range Spec Sheet
	50-100	YES	NO	6	12	50/100 yard & 100 Meters
21	Lodge Left- Truing Range					See Lodge Range Spec Sheet
	100-700	100 Zero	YES	12	2	Steel only at 300, 500 and 700
22	Long Range Movers- Var. SPD-Steel- <i>Military/LE</i>					See Bones Spec Sheet
	350-500	100 Zero	YES	20	12	Steel movers, variable speed 1MPH-10MPH at 350.
23	Markhor- Truing and Basic Walkout					See Markhor Spec Sheet
	100-700	YES	YES	30	6	Paper at 100/200, Steel every 50 to 700.
24	Pistol Range- Sight In, React. & Combat					See Lodge Range Spec Sheet
	5-50	Yes	YES	96	10	Trees, Racks and human silhouettes
25	Plains game- Walk and Drive					See Plains Game Spec Sheet
	65-310	YES	YES	22	6	Life Size non-animated targets with steel plates next to each. African Plains game species.
26	Repeater- Truing and Walkout					See Repeater Spec Sheet
	100-700	YES	YES	60	16	Paper at 100/200, Paper Steel 250/300, Steel only every 50 yards to 700. Two sets at each yard line.
27	Robots- Mobile-RC- <i>Military/LE</i>					NO Spec Sheet-Used anywhere
	Mobile	YES	YES	8	12	Remote control, 1-30MPH, used mainly as movers, going away, charging, and evasive normally at the Bones Range and Long Range Movers (#10 & #26).
28	Silver- Truing and Basic Walkout					See Silver Spec Sheet
	100-1800	YES	YES	96	12	Paper at 100, 1, 2 & 3Moa at all yard lines, 400 and out each with dual target stands.
29	Snaps Range- Instinctive/Reactionary					See Lodge Range Spec Sheet
	5-25	YES	NO	30	6	Life size cape buffalo charging targets for instinctive/reactive training
30	Spinella- Extreme Long Range					See Spinella Spec Sheet
	2,000-4,510	NO	YES	20	6	Multiple shooting pads at 2,000, 2,500, 3,250, 3,600, 3,800, 4,000, 4,210 & 4,550. Targets are stationary and Shooters move. Target viewing is done with an enclosed steel bunker from 25 yards.
31	"St. Hubert's"- LR Truing to 3,000 UKD					See St. Hubert's Spec Sheet
	100-3,000	100 Zero	YES	86	12	From 100 Zero to 3,000 yards, shooting through four canyons with varying high winds, targets are UKD.
32	"Sticks-Long Walk"- LR Truing & 1800 UKD					See Sticks-Long Walk Spec Sheet
	100-1,800	100 Zero	YES	54	12	From Zero to 1,800 yards, shooting through seven canyons with varying high winds, most targets are at odd distance yard lines.
33	"Two-Mile Range"- LR Truing to 3,600 UKD					See Two-Mile Spec Sheet
	100-3,600	100 Zero	YES	64	12	From 100 Zero to 3,600 yards, shooting through five canyons with varying high winds, targets are UKD.
34	Victor India/360 - Truing, Wind, 4 Dir. Fire					See VI Spec Sheet
	50-2,500	YES	YES	192	24	Paper to 250, Steel 200 to 2,000, 1, 2 & 3Moa at all yard lines. Multiple shooting directions for wind.
35	Whitetail- Truing and Basic Walkout					See Whitetail Spec Sheet
	100-700	YES	YES	30	10	Paper at 100/200, Steel every 50 to 700, 800 & 1,000.
Total Targets				1869		



FTW Operation, LLC

Contact

FTW Operations, LLC (DBA FTW/SAAM), 1802 Horse Hollow Road, Barksdale, Texas 78828. PH) 830-234-4366, Fax) 830-234-4168, timfallon@ftwsaam.com, www.ftwsaam.com

Federal ID#

FEIN # 20-4128651, DUNS: 078691613, CAGE: 6TZF3

Ownership

FTW Operations, LLC is owned by FTW Partners, LP. FTW Partners is owned by The Fallon Family Trust, established 2005. 100% Owned by Tim and Susan Fallon.

The FTW Ranch has been owned by Tim and Susan Fallon since 1996 and is currently 12,000+ acres. The main line of operations for the FTW by revenue source since 2005 is:

1) SAAM™, a world renowned Hunter Training Program, held throughout the year. The program readies hunters travelling worldwide to better prepare for their often dangerous and difficult hunts.

2) U.S. Military, U.S. Government Agencies and U.S. Law Enforcement Training Facility. The FTW specializes in custom built ranges to suit training requirements by units of the United States Government. ***NOTE: the FTW does not do any Civilian Tactical Training whatsoever!*** All U.S Government training is done in private with no other operations or visitors allowed during training, unless agreed to in writing by the agency being trained.

3) The FTW provides hunts for species born and raised on the ranch, including whitetail deer and 14 other species of endangered species from around the world that do well in the FTW's very rugged mountains.

4) The FTW has an extensive breeding facility for endangered or extinct species from around the world that are either released into the wild on the FTW or bought/sold into the Zoo industry throughout the U.S.

FTW Operations Description